



April 18, 2020

To,
National Stock Exchange of India Limited
Exchange Plaza,
Plot No. C/1, G-Block,
Bandra-Kurla Complex,
Bandra (E), Mumbai – 400 051

Symbol: MHHL

Subject: Intimation pursuant to Regulation 30 of SEBI (Listing Obligations and Disclosure Requirements) Regulations, 2015, for launch of New Product “Anti-Virus Kit” to combat outbreak of COVID-19

Dear Sir,

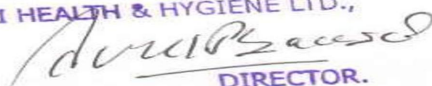
Pursuant to Regulation 30 of SEBI (Listing Obligation and Disclosure Requirements) Regulations 2015, we are pleased to inform you that our Company has launched an Anti-Virus Kit containing protective goggle, isolation gown, shoe covers, face shield, gloves, face mask and adult diapers to fight germs in this pandemic time.

The launch of this Anti-Virus Kit is one of the initiatives of the Company to fight against the outbreak of COVID -19. The detailed presentation on the launch of Anti-Virus Kit is attached.

The same may please be taken on record and suitably disseminated to all concerned.

Thanking You,

For Mohini Health & Hygiene Limited

For MOHINI HEALTH & HYGIENE LID.,

DIRECTOR.

Avnish Bansal
Managing Director

CIN NO. L17300MP2009PLC022058

Manufacturing Unit & Registered Office: Plot No. 109, Sector 3, Industrial Area, Pithampur, Dist – 454774 (M.P.) INDIA
+91-7292-426665, 7292-426666, Email: customercare@mohinihealthandhygiene.com, www.mohinihealthandhygiene.com

YOUR SAFETY IS OUR PRIORITY

ANTI VIRUS KIT - 7 ITEMS AS ONE KIT



PROTECTIVE GOGGLE



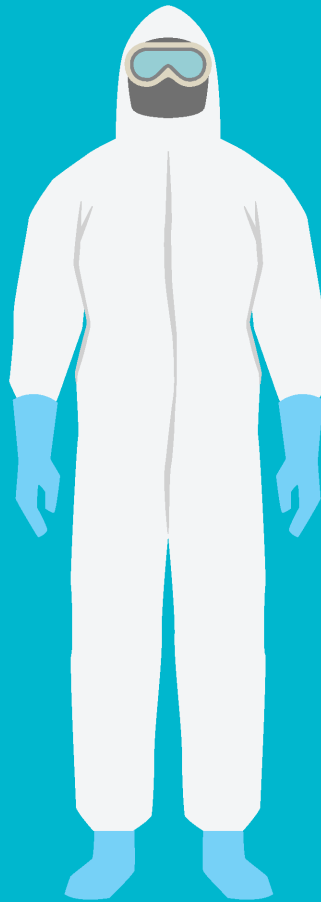
ISOLATION GOWN



SHOE COVER



FACE SHIELD



GLOVES



FACE MASK



ADULT DIAPERS

YOUR SAFETY IS OUR PRIORITY



DESCRIPTION

Mohini's Protective Coverall is designed to help protect against certain light liquid splashes and hazardous dusts.

The key features include:

- Breathable material to help reduce heat build-up and promote comfortable wear
- Knit cuffs with elasticized waist and ankles for convenience and freedom of movement.
- Three panel hood design for compatibility with complementary PPE
- Two-way zipper with storm flap
- Anti-static coating on both sides

USE LIMITATIONS

Do not use for :

- Contact with heavy oils, sparks or flames, or combustible liquids
- Exposure situations resulting in spray or liquid buildup on the suit
- Environments with high mechanical risks (abrasions, tears, cuts)
- Environments with exposure to hazardous substances beyond CE type 5 certification
- Environments with conditions of excessive heat

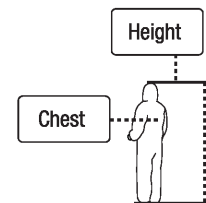
MATERIALS

- Suit: Spun bond Laminated with PE, White / Blue
- Zipper: Nylon on Polyester Braid
- Elastic: Spandex + Polyester
- Cuffs: Polyester
- Thread: Polyester
- Basis Weight: 60 grams/m²

This product does not contain components made from silicone or natural rubber latex.

SIZING

An appropriate size garment should be selected to allow sufficient movement for the task. Meets ANS 101- 1996 (R2008) sizing guidelines.



	Height		Chest	
M	66 – 69 in	167 – 176 cm	36 – 39 in	92 – 100 cm
L	69 – 71 in	174 – 181 cm	39 – 43 in	100 – 108 cm
XL	70 – 74 in	179 – 187 cm	43 – 45 in	108 – 115 cm
XXL	73 – 76 in	186 – 194 cm	45 – 49 in	115 – 124 cm
3XL	76 – 78 in	194 – 200 cm	49 – 52 in	124 – 132 cm
4XL	78 – 81 in	200 – 206 cm	52 – 55 in	132 – 140 cm

YOUR SAFETY IS OUR PRIORITY



STORAGE AND DISPOSAL

- Store in dry, clean conditions in original packaging
- Store away from direct sunlight, sources of high temperature, and solvent vapours
- Store within the temperature range -20°C to + 25°C (-4°F to +68°F) and with relative humidity below 80%
- Shelf life is 3 years from date of manufacture when stored as stated above
- Replace garments if damaged, heavily contaminated or in accordance with local work practice
- Handle and dispose of contaminated garments with care and in accordance with national regulations



Limited Use



Do not tumble dry



Do not wash



Do not dry-clean



Do not bleach



Flammable — keep away from sparks or flames



Do not iron

Product must never be altered or modified.

APPLICATIONS & PERFORMANCE

Non-hazardous Particulates	Yes
Non-hazardous Liquid Splash	Yes
Hazardous Dusts and Fibers	Yes
Liquid Continuous Contact/Immersion	No
Gases and Vapours	No
Hazardous Liquid Splash	No*
Hazardous Liquid Spray	No
Organic Solvents	No
Acids/Alkalis if chemical is compatible with suit material*	Yes,

TYPICAL APPLICATIONS

Typical applications may include insulation installation, asbestos and lead abatement, coal dust in power plants, woodworking, metal polishing, light-duty building cleaning, general powder handling, general industrial clean-up and maintenance, machine or vehicle maintenance and food processing.

In all cases a risk assessment should be carried out. Users must be trained and have read all User Instructions. Use limitations and performance data should be considered to ascertain the protection required. If in doubt, contact a safety professional

For more information on Mohini's products and services please contact Mohini.

Important Notice

This guide is only an outline. It should not be used as the only means for selecting protective clothing. Before using any protective clothing, the wearer must read and understand the user instructions for each product. Specific country legislation must be observed. If in doubt, contact a safety professional. Sections of the most appropriate PPE will depend on the particular situation and should only be made by a competent person knowledgeable of the actual working conditions and the limitations of PPE.

Final determination as to the suitability of these products for a particular situation is the user's responsibility. This information is subject to revision at any time. Always read and follow all User Instructions supplied with your Mohini's Protective Coveralls in order to ensure correct operation. If you have questions contact Mohini's Technical Service Department.

WARRANTY: Mohini will replace or refund the purchase price of any Occupational Health and Environmental Safety Division (OH&ESD) product found to be defective in material, manufacture, or not in conformance with any express warranty. This warranty is exclusive and is in lieu of any implied warranty of merchantability or fitness for a particular purpose.

LIMITATION OF LIABILITY: Except as provided above, Mohini shall not be liable or responsible for any loss or damage, whether direct, indirect, incidental, special or consequential arising out of the sale, use or misuse of Mohini OH & ESD products, or the user's inability to use such products. THESE REMEDIES SET FORTH HEREIN ARE EXCLUSIVE.

*For additional chemical penetration data, please contact your local Mohini Technical Service Representative.



Mohini Health & Hygiene Ltd.

- 📍 Plot No. 109, Sector III, Industrial Area Pithampur, Dhar - 454774
- ☎ For any query, contact at: +91-7292-426666
- ✉ customercare@mohinihealthandhygiene.com
- 🌐 www.mohinihealthandhygiene.com

Donning PPE for OR



Doffing PPE for OR



10. Remove N95



11. Wash hands & put on new mask



1. Remove gown & Gloves
*Both pairs of gloves should come off with gown as they are covering cuff.

2. Have gloves removed as one unit with gown. **DO NOT** touch outside of gloves with bare hands.
*In case one pair doesn't come off follow steps 6 & 7.



9. Remove goggles, surgical mask & cap

12. Shower, change into clean scrubs



3. Put on exam gloves



4. Remove shoe covers/trauma boots



8. Put on new gloves



7. Wash hands



6. Remove gloves

5. Keep the rest of head gear until out of OR

